

VIEWPOINT LOCATION



TRIPOD LOCATION

TYPE 1 PHOTOVIEW - EXISTING VIEW

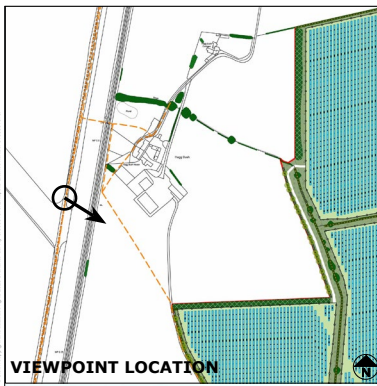
To be viewed at a comfortable arm's length

Camera make & model	- Canon EOS 6D MkII	Viewpoint height (AOD)	- 7.15m	Visualisation Type	- Type 1 (LI TGN 06/19)
Lens make & focal length	- Canon EF 50mm, f/1.4 USM	Distance from site	- 275m	Horizontal Field of View	- 90°
Date & time of photograph	- 31/05/2023 @ 10:48	Projection	- Cylindrical	Height of camera AGL	- 1.5m
OS grid reference	- 460694, 427734	Enlargement factor	- 96%	Page size / Image size (mm)	- 841 x 297 / 820 x 235

HELIOS RENEWABLE ENERGY PROJECT

VIEWPOINT 26 - EXISTING

VIEW FROM PUBLIC RIGHT OF WAY (35.14/15/3)



VIEWPOINT LOCATION



TRIPOD LOCATION

TYPE 3 PHOTOMONTAGE - YEAR 1

NOTE-

The panels and fencing shown in the above visualisation is based on an indicative layout. The security fencing shown in the visualisation represents the outer extents of the parameter area. This shows the maximum possible extent of the development, and as such is a worse case scenario. The panels within the visualisation are shown at their maximum height of 3m.

To be viewed at a comfortable arm's length

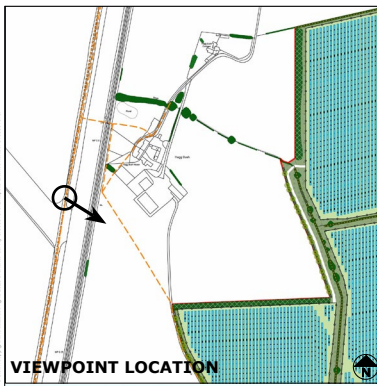
Camera make & model	- Canon EOS 6D MkII	Viewpoint height (AOD)	- 7.15m	Visualisation Type	- Type 1 (LI TGN 06/19)
Lens make & focal length	- Canon EF 50mm, f/1.4 USM	Distance from site	- 275m	Horizontal Field of View	- 90°
Date & time of photograph	- 31/05/2023 @ 10:48	Projection	- Cylindrical	Height of camera AGL	- 1.5m
OS grid reference	- 460694, 427734	Enlargement factor	- 96%	Page size / Image size (mm)	- 841 x 297 / 820 x 235

HELIOS RENEWABLE ENERGY PROJECT

VIEWPOINT 26 - YEAR 1

VIEW FROM PUBLIC RIGHT OF WAY (35.14/15/3)





VIEWPOINT LOCATION



TRIPOD LOCATION

TYPE 3 PHOTOMONTAGE - YEAR 15

NOTE-

The panels and fencing shown in the above visualisation is based on an indicative layout. The security fencing shown in the visualisation represents the outer extents of the parameter area. This shows the maximum possible extent of the development, and as such is a worse case scenario. The panels within the visualisation are shown at their maximum height of 3m.

To be viewed at a comfortable arm's length

Camera make & model	- Canon EOS 6D MkII	Viewpoint height (AOD)	- 7.15m	Visualisation Type	- Type 1 (LI TGN 06/19)
Lens make & focal length	- Canon EF 50mm, f/1.4 USM	Distance from site	- 275m	Horizontal Field of View	- 90°
Date & time of photograph	- 31/05/2023 @ 10:48	Projection	- Cylindrical	Height of camera AGL	- 1.5m
OS grid reference	- 460694, 427734	Enlargement factor	- 96%	Page size / Image size (mm)	- 841 x 297 / 820 x 235

HELIOS RENEWABLE ENERGY PROJECT

VIEWPOINT 26 - YEAR 15

VIEW FROM PUBLIC RIGHT OF WAY (35.14/15/3)

DOCUMENT REFERENCE - ENE_010_01 | DATE - AUGUST 2023

