

VIEWPOINT LOCATION



TRIPOD LOCATION



TYPE 1 PHOTOVIEW - EXISTING VIEW

To be viewed at a comfortable arm's length

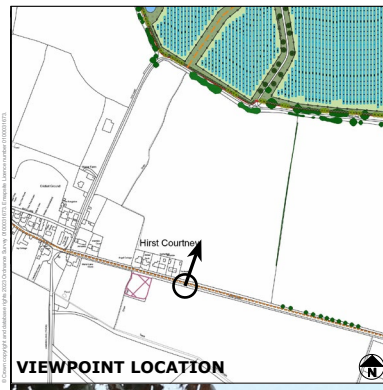


Camera make & model	- Canon EOS 6D MkII	Viewpoint height (AOD)	- 7.95m	Visualisation Type	- Type 1 (LI TGN 06/19)
Lens make & focal length	- Canon EF 50mm, f/1.4 USM	Distance from site	- 359m	Horizontal Field of View	- 90°
Date & time of photograph	- 31/05/2023 @ 10:48	Projection	- Cylindrical	Height of camera AGL	- 1.5m
OS grid reference	- 461560, 424330	Enlargement factor	- 96%	Page size / Image size (mm)	- 841 x 297 / 820 x 235

HELIOS RENEWABLE ENERGY PROJECT

VIEWPOINT 22 - EXISTING

VIEW FROM HIRST ROAD



VIEWPOINT LOCATION



TRIPOD LOCATION



TYPE 3 PHOTOMONTAGE - YEAR 1

NOTE-

The panels and fencing shown in the above visualisation is based on an indicative layout. The security fencing shown in the visualisation represents the outer extents of the parameter area. This shows the maximum possible extent of the development, and as such is a worse case scenario. The panels within the visualisation are shown at their maximum height of 3m.

To be viewed at a comfortable arm's length

Camera make & model - Canon EOS 6D MkII
Lens make & focal length - Canon EF 50mm, f/1.4 USM
Date & time of photograph - 31/05/2023 @ 10:48
OS grid reference - 461560, 424330

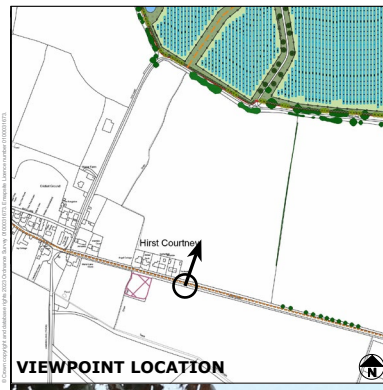
Viewpoint height (AOD) - 7.95m
Distance from site - 359m
Projection - Cylindrical
Enlargement factor - 96%

Visualisation Type - Type 1 (LI TGN 06/19)
Horizontal Field of View - 90°
Height of camera AGL - 1.5m
Page size / Image size (mm) - 841 x 297 / 820 x 235

HELIOS RENEWABLE ENERGY PROJECT

VIEWPOINT 22 - YEAR 1

VIEW FROM HIRST ROAD



TYPE 3 PHOTOMONTAGE - YEAR 15

NOTE-

The panels and fencing shown in the above visualisation is based on an indicative layout. The security fencing shown in the visualisation represents the outer extents of the parameter area. This shows the maximum possible extent of the development, and as such is a worse case scenario. The panels within the visualisation are shown at their maximum height of 3m.

To be viewed at a comfortable arm's length

Camera make & model - Canon EOS 6D MkII
Lens make & focal length - Canon EF 50mm, f/1.4 USM
Date & time of photograph - 31/05/2023 @ 10:48
OS grid reference - 461560, 424330

Viewpoint height (AOD) - 7.95m
Distance from site - 359m
Projection - Cylindrical
Enlargement factor - 96%

Visualisation Type - Type 1 (LI TGN 06/19)
Horizontal Field of View - 90°
Height of camera AGL - 1.5m
Page size / Image size (mm) - 841 x 297 / 820 x 235

HELIOS RENEWABLE ENERGY PROJECT

VIEWPOINT 22 - YEAR 15

VIEW FROM HIRST ROAD