



HELIOS RENEWABLE
ENERGY
PROJECT

Preliminary Environmental Information Report

Volume 3: Technical Appendices

Appendix 7.7: Visualisations



TYPE 1 PHOTOVIEW - EXISTING VIEW

To be viewed at a comfortable arm's length

Camera make & model	- Canon EOS 6D MkII	Viewpoint height (AOD)	- 5.18m	Visualisation Type	- Type 1 (LI TGN 06/19)
Lens make & focal length	- Canon EF 50mm, f/1.4 USM	Distance from site	- 5m	Horizontal Field of View	- 90°
Date & time of photograph	- 31/05/2023 @ 10:48	Projection	- Cylindrical	Height of camera AGL	- 1.5m
OS grid reference	- 464184, 425520	Enlargement factor	- 96%	Page size / Image size (mm)	- 841 x 297 / 820 x 235

HELIOS RENEWABLE ENERGY PROJECT

VIEWPOINT 1A - EXISTING

VIEW FROM PUBLIC RIGHT OF WAY (35.18/16/1)

DOCUMENT REFERENCE - ENE_010_01 | DATE - AUGUST 2023





TYPE 3 PHOTOMONTAGE - YEAR 1

NOTE-
 The panels and fencing shown in the above visualisation is based on an indicative layout. The security fencing shown in the visualisation represents the outer extents of the parameter area. This shows the maximum possible extent of the development, and as such is a worse case scenario. The panels within the visualisation are shown at their maximum height of 3m.

To be viewed at a comfortable arm's length

Camera make & model	- Canon EOS 6D MkII	Viewpoint height (AOD)	- 5.18m	Visualisation Type	- Type 1 (LI TGN 06/19)
Lens make & focal length	- Canon EF 50mm, f/1.4 USM	Distance from site	- 5m	Horizontal Field of View	- 90°
Date & time of photograph	- 31/05/2023 @ 10:48	Projection	- Cylindrical	Height of camera AGL	- 1.5m
OS grid reference	- 464184, 425520	Enlargement factor	- 96%	Page size / Image size (mm)	- 841 x 297 / 820 x 235

HELIOS RENEWABLE ENERGY PROJECT

VIEWPOINT 1A - YEAR 1

VIEW FROM PUBLIC RIGHT OF WAY (35.18/16/1)





TYPE 3 PHOTOMONTAGE - YEAR 15

NOTE-

The panels and fencing shown in the above visualisation is based on an indicative layout. The security fencing shown in the visualisation represents the outer extents of the parameter area. This shows the maximum possible extent of the development, and as such is a worse case scenario. The panels within the visualisation are shown at their maximum height of 3m.

To be viewed at a comfortable arm's length

Camera make & model - Canon EOS 6D MkII
Lens make & focal length - Canon EF 50mm, f/1.4 USM
Date & time of photograph - 31/05/2023 @ 10:48
OS grid reference - 464184, 425520

Viewpoint height (AOD) - 5.18m
Distance from site - 5m
Projection - Cylindrical
Enlargement factor - 96%

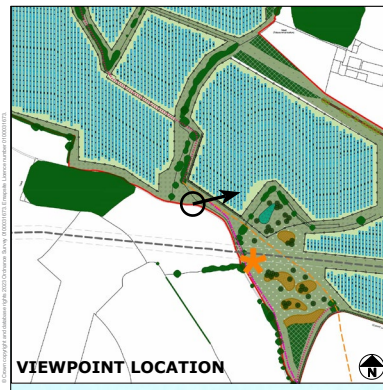
Visualisation Type - Type 1 (LI TGN 06/19)
Horizontal Field of View - 90°
Height of camera AGL - 1.5m
Page size / Image size (mm) - 841 x 297 / 820 x 235

HELIOS RENEWABLE ENERGY PROJECT

VIEWPOINT 1A - YEAR 15

VIEW FROM PUBLIC RIGHT OF WAY (35.18/16/1)

DOCUMENT REFERENCE - ENE_010_01 | DATE - AUGUST 2023



VIEWPOINT LOCATION



TRIPOD LOCATION

TYPE 1 PHOTOVIEW - EXISTING VIEW

To be viewed at a comfortable arm's length

Camera make & model	- Canon EOS 6D MkII	Viewpoint height (AOD)	- 5.18m	Visualisation Type	- Type 1 (LI TGN 06/19)
Lens make & focal length	- Canon EF 50mm, f/1.4 USM	Distance from site	- 5m	Horizontal Field of View	- 90°
Date & time of photograph	- 31/05/2023 @ 10:48	Projection	- Cylindrical	Height of camera AGL	- 1.5m
OS grid reference	- 464184, 425520	Enlargement factor	- 96%	Page size / Image size (mm)	- 841 x 297 / 820 x 235

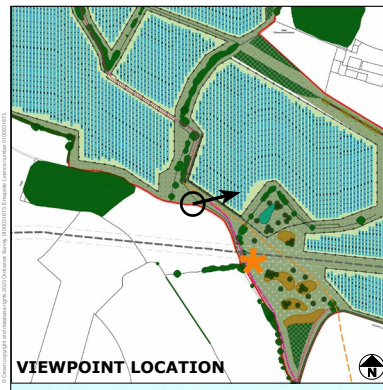
HELIOS RENEWABLE ENERGY PROJECT

VIEWPOINT 1B - EXISTING

VIEW FROM PUBLIC RIGHT OF WAY (35.18/16/1)

DOCUMENT REFERENCE - ENE_010_01 | DATE - AUGUST 2023





TYPE 3 PHOTOMONTAGE - YEAR 1

To be viewed at a comfortable arm's length

Camera make & model	- Canon EOS 6D MkII	Viewpoint height (AOD)	- 5.18m	Visualisation Type	- Type 1 (LI TGN 06/19)
Lens make & focal length	- Canon EF 50mm, f/1.4 USM	Distance from site	- 5m	Horizontal Field of View	- 90°
Date & time of photograph	- 31/05/2023 @ 10:48	Projection	- Cylindrical	Height of camera AGL	- 1.5m
OS grid reference	- 464184, 425520	Enlargement factor	- 96%	Page size / Image size (mm)	- 841 x 297 / 820 x 235

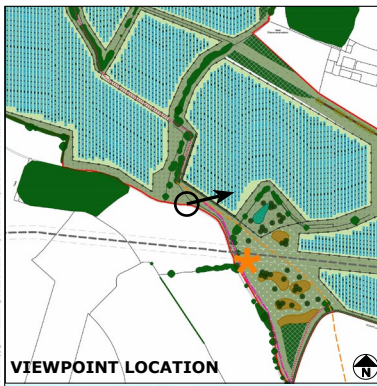
HELIOS RENEWABLE ENERGY PROJECT

VIEWPOINT 1B - YEAR 1

VIEW FROM PUBLIC RIGHT OF WAY (35.18/16/1)

DOCUMENT REFERENCE - ENE_010_01 | DATE - AUGUST 2023





VIEWPOINT LOCATION



TRIPOD LOCATION

TYPE 3 PHOTOMONTAGE - YEAR 15

To be viewed at a comfortable arm's length

Camera make & model	- Canon EOS 6D MkII	Viewpoint height (AOD)	- 5.18m	Visualisation Type	- Type 1 (LI TGN 06/19)
Lens make & focal length	- Canon EF 50mm, f/1.4 USM	Distance from site	- 5m	Horizontal Field of View	- 90°
Date & time of photograph	- 31/05/2023 @ 10:48	Projection	- Cylindrical	Height of camera AGL	- 1.5m
OS grid reference	- 464184, 425520	Enlargement factor	- 96%	Page size / Image size (mm)	- 841 x 297 / 820 x 235

HELIOS RENEWABLE ENERGY PROJECT

VIEWPOINT 1B - YEAR 15

VIEW FROM PUBLIC RIGHT OF WAY (35.18/16/1)

DOCUMENT REFERENCE - ENE_010_01 | DATE - AUGUST 2023

