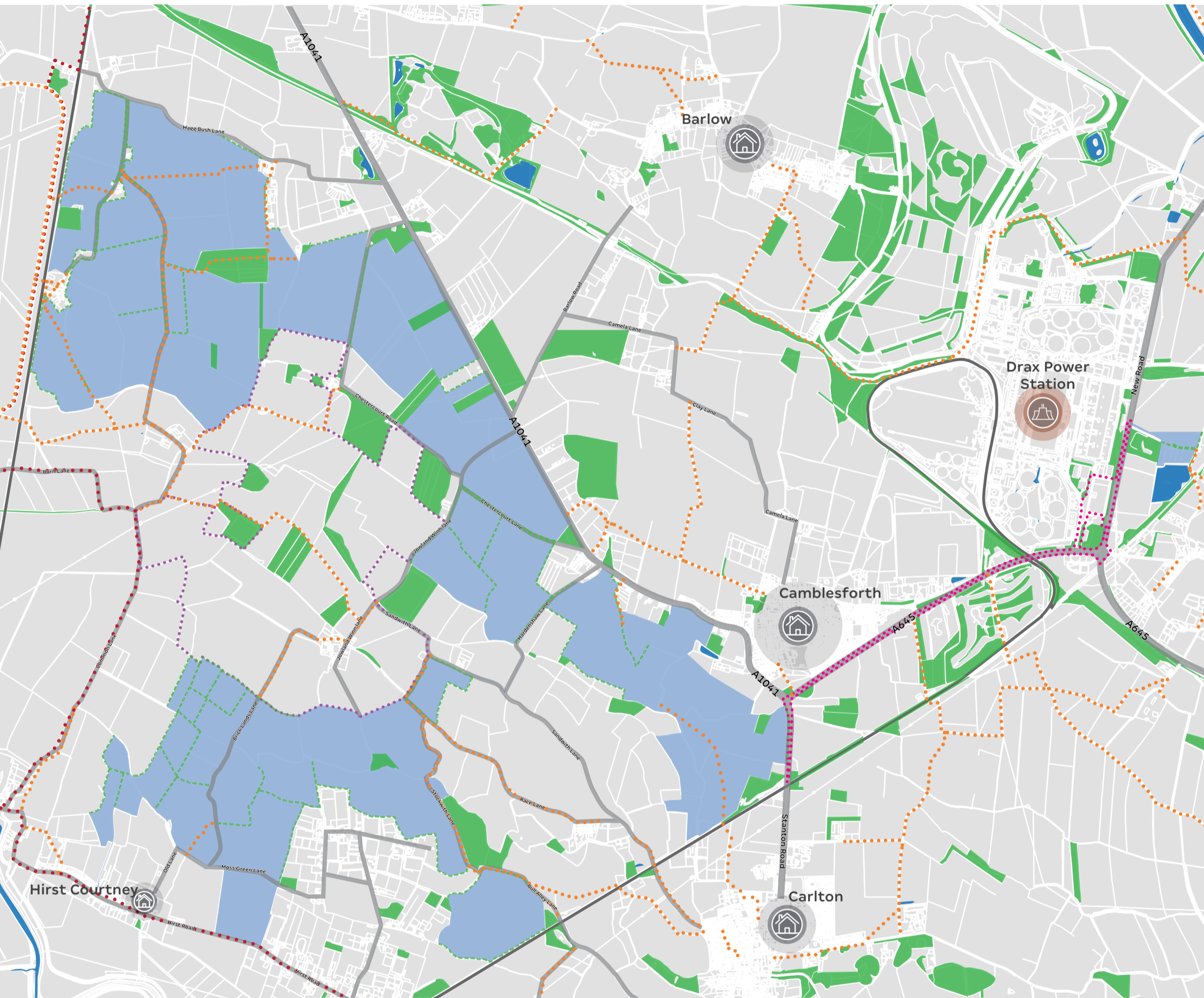




HELIOS RENEWABLE ENERGY PROJECT

Concept Masterplan



Evolving Design

The development area shown provides the total extents being assessed as part of our project. We are at a very early stage in the process and will carefully consider all the feedback received and review this alongside our technical assessments to develop our proposal further.



Planting Proposals

Following a review from our technical team we will be looking at how planting will be incorporated into the design to screen the development, minimise visual impact on the nearest residential properties and reinforce existing vegetation.

Key

- Development Area
- Underground Cable Connection (Potential Route)
- Underground Grid Connection (Potential Route)
- Existing Woodland
- Existing Hedgerow
- Existing Public Right of Way
- Trans Pennine Trail
- Settlements



Soils

The project would represent a 40-year period in which the land can 'rest' and be maintained in accordance with a site-specific soil management plan to increase soil organic matter.



Biodiversity

The proposal provides significant opportunities for wildlife through new ecological improvement areas and the enhancement of existing habitat corridors within the proposal.



Public Access

The scheme will be designed around existing public rights of way which will remain accessible during construction and operation.



Renewable Energy

Through the development of Helios Renewable Energy Project, we hope to make a significant contribution towards the UK Government aims to reduce carbon emissions significantly over the coming years and to reach net zero by 2050.



Community

We would be grateful for local views on the project including any specific considerations you feel are important to the local community. If you have an idea for a sustainable community based scheme which could benefit from the project, then please share your idea with us.